



RIHGA ROYAL HOTEL HIROSHIMA

RIHGA ROYAL HOTEL HIROSHIMA

Address: 6-78 Motomachi, Naka-ku, Hiroshima City 730-0011

TEL: +81(0) 82- 502-1121

FAX: +81(0) 82- 228-5415

E-MAIL hiroshima@rihga.co.jp

URL: www.rihga.co.jp/hiroshima

RIHGA Royal Hotel Hiroshima is a landmark hotel that catches your attention in Hiroshima city. With the Seto-Inland Sea visible at a distance from the upper floors on the Southern side of the hotel, it is an exquisite hotel with an elegant atmosphere. Nestled in the heart of Hiroshima city, that boasts of two World Heritage Sites- Atomic Bomb Dome, and Itsukushima Shrine. The hotel is within walking distance to the Hiroshima Peace Memorial Museum, and the Hiroshima Castle. It is the perfect location for sightseeing in Hiroshima.

General Information

Check In: 14:00/ Check Out 11:00

No. of Rooms

491/ Structural Information: 35F above ground 2F underground

Established

1994 (Previous Name: New Hiroshima Hotel, Estb. 1955)

Internet Information

- In Rooms: WI-FI (Free LAN service)
- In the hotel: WI-FI (Free LAN service) Available in common areas including Lobby, Restaurants, and Banquet Rooms
- Additional internet services are available for a charge.

Location

Situated the heart of Hiroshima City's business, and sightseeing areas. From the upper floors on the Northern side, Hiroshima Castle can be viewed. From the Southern side, the Seto- Inland Sea.

Access

- From JR Hiroshima Station → 15 minutes by Streetcar to Kamiyacho Higashi Station followed by a 3minute walk to the hotel
- From JR Hiroshima Station: 10 minutes by city bus to Kamiyacho Station followed by a 3-minute walk to the hotel.
- From Hiroshima Airport: 55 minutes by car/ Limousine Bus



Room Information

Total Rooms: 491
(includes 414 Twin Rooms, 56 Double Rooms, 8 Junior Suites, 13 other room types)

Maximum No. of guests: 990 persons

General Room Equipment/ Amenities:

DVD*, Telephone, Refrigerator, Safety Box, Humidifier, Japanese Tea Set, Trouser Press, Hair Dryer, Toothbrush Set, Shampoo & Conditioner, Body Wash, Body Towel, Razor, Shaving Foam*, Hairbrush, Slippers, Bathrobe*, One-Piece Pajama, Bath Towel, Towel, Bidet Toilet, Card Key, Shower Stall*, Clothes Brush, Magnifying Glass Mirror, Air Freshener, Ladies Amenities, Electric Kettle, Hand Soap, Bath Gel*, Mineral Water*, Drip Coffee*.

*Items not available in all rooms.

Voltage: 100V • 60Hz

General Facilities/ Services

Banquet/ Meeting Rooms: 31 Rooms

Parking: 100 spaces (paid)

Beauty Salon, Barber, Wedding Hall, Hotel Shopping Area, Clinic, Photo Studio, Business Support Service (Front Desk), Concierge, Cell Phone Charging Service (Front Desk), PC Rental (paid), Shipping/ Delivery Service (1F Cloak), Membership Based Health Club (includes pool/sauna) (paid), Child Care Room, Relaxation Area, Vending Machines (14F-29F), ATM (Local Service only), Laundry Service (paid), Coin Laundry (paid), Room Service (paid)

Restaurant / Lounge Area

Total No. of restaurants: 8

Cuisine/ Restaurant Name	Floor	No. of Seats	Operating Hours
French Cuisine Restaurant CHAMBORD	33F	44	D *1
Western Cuisine Dining LUORE	1F	120	BF/L/D
Chinese Cuisine Chinese Dining RYU	6F	76	L/D *2
Japanese Cuisine RIJOH	6F	83	L/D *3
SHUSEN	6F	28	D *3
Teppanyaki NANIWA	6F	40	L/D *4
Western Cuisine/ Café Sky Dining RIHGA TOP	33F	72	FULL
BAR Bar COLUMBA	2F	20	D *3

*General Seating/ Private Seating Available

*Operating Hours Code: BF: Breakfast / L: Lunch / D: Dinner / FULL: All Day
Closed: *1: Weekdays, *2: Thursdays, *3: Tuesdays, *4: Mondays

BANQUET /MEETING ROOM INFORMATION

Floor	Hall Name	Capacity (ni)	DxW (m)	Height (m)	Event Type					Other
					School	Theater	Hollow Square	Dinner	Buffet	
3 F	Seto Hall	262	24.0 × 11.0	4.2	180	300	70	100	200	All rooms can be dimmed. (Except Fuku, Tsuru, Hana, Kotobuki)
	Aki Hall	144	16.0 × 9.0	3.8	70	120	50	60	80	
	Ondo Hall	248	12.6 × 18.8	4.1	150	250	60	100	180	
	Miyajima Hall	386	19.4 × 19.0	4.1	220	350	70	170	300	
4 F	Royal Hall	1,380	51.0 × 26.6	7.0	1,100	1,800	—	820	2,000	
	Section①	485	17.4 × 26.6	7.0	300	550	—	240	400	
	Section②	435	16.3 × 26.6	7.0	250	500	—	240	350	
	Section③	435	16.3 × 26.6	7.0	250	500	—	240	350	
	Crystal Hall	589	31.4 × 18.0	7.0	400	700	—	250	500	
	Kaede	97	9.4 × 10.2	3.2	40	50	—	30	40	
	Matsu	73	12.6 × 5.8	3.3	30	40	20	30	40	
	Take	83	13.6 × 5.8	3.3	40	50	24	40	40	
5 F	Ume	67	11.2 × 5.8	3.3	30	40	20	30	40	
	Tachibana	52	10.0 × 5.0	3.2	—	—	—	—	—	
	Fuku	56	5.5 × 9.6	3.1	20	30	—	—	—	
	Tsuru	58	6.0 × 9.6	3.1	20	30	—	—	—	
12 F	Hana	45	7.8 × 5.6	3.2	18	25	—	—	—	
	Kotobuki	42	6.4 × 6.2	3.2	18	25	—	—	—	
12 F	Small Rooms (Lilac, Freesia, Carnation, Gerbera, Sweet Pea, Iris, Calla lily, Cosmos)	57 ~ 68	7.0 ~ 9.0 × 6.0 ~ 7.0	2.6	30	40	20	30	30	
	Lavender, Olive, Violet, Edel Weiss	20 ~ 24	—	2.6	—	—	—	—	—	
32 F	Diamond Room	206	9.5 × 22.4	3.3	—	—	—	80	150	
	Emerald Room	102	7.0 × 13.6	3.2	—	—	—	40	50	
	Ruby Room	93	6.5 × 13.6	3.2	—	—	—	20	—	
	Sapphire Room	113	6.6 × 17.1	3.2	—	—	—	50	60	
	Section①	54	6.4 × 8.4	3.2	—	—	—	20	—	
	Section②	59	6.7 × 8.7	3.2	—	—	—	30	—	

● All Banquet and Meeting Halls are non-smoking. There are smoking rooms located throughout the hotel.

GUEST ROOM RATE INFORMATION*1

Room type	Code	1 person (JPY)	2 persons (JPY)	3 persons (JPY)	4 persons (JPY)	No. of Rooms	Size (㎡)	Bed Size (cm)	Max. No. of guests	SM/NS	Sofa Bed	Connecting Room	
Standard 1 4 5 F	Twin Room	CT1N (D2T)	24,200	26,620	—	—	29	22.0	110×200	2	—	—	—
		CT2	26,620	29,040	—	—	22	24.0	110×200	2	○	—	—
		CT2N (E2T)					50				—	—	
		CT3	29,040	31,460	—	—	12	26.0	110×200	2	○	—	—
		CT3N (F2T)					24				—	—	
		T1N	29,040	31,460	—	—	36	26.0	110×200	2	—	—	—
		T2	37,510	39,930	43,560	—	10	34.0	120×200	3	○	—	—
		T2N (C2T) (G2T)					50				—	—	
		T3	41,140	43,560	47,190	—	4	35.0	120×200	3	○	—	—
		T3N					32				—	—	
	T4	44,770	47,190	50,820	54,450	8	38.0	120×200	4	○	—	—	
	T4N (C1T)					40				—	—		
	Double Room	D1N (D1D)	25,410	27,830	—	—	12	23.0	160×200	2	—	—	—
		D2	36,300	38,720	—	—	4	31.0	180×200	2	○	—	—
		D2N (C1K)					20				—	—	
Accessible Room	BFN	33,880	36,300	—	—	3	33.0	140×200	2	—	—	—	
Triple Room	3BN	—	—	45,980	—	4	34.0	120×200	3	—	—	—	
Family Room	4BN	—	—	—	72,600	1	55.0	120×200	4	—	—	—	
Superior 2 6 9 F	Twin Room	ST1	44,770	47,190	50,820	—	2	34.0	120×200	3	○	—	—
		ST1N					10				—	—	
		ST2	48,400	50,820	54,450	—	6	35.0	120×200	3	○	—	—
		ST2N (A1T) (A2T)					24				—	—	
		ST3	52,030	54,450	58,080	61,710	4	38.0	120×200	4	○	—	—
	ST3N (C3T)	20					—				—		
	Double Room	SD1	43,560	45,980	—	—	4	31.0	180×200	2	○	—	—
		SD1N (B1K)					12				—	—	
		SD2	45,980	48,400	—	—	2	35.0	180×200	2	○	—	—
	Connecting Room	SCTN	52,030	54,450	58,080	—	4	38.0	120×200	3	—	—	—
Family Room	S4B	—	—	—	84,700	1	68.0	120×200	4	○	—	—	
Connecting Twin Suite	SSUT	94,380	96,800	—	—	1	76.0	120×200	2	○	—	—	
Connecting Double Suite	SSUD					1		180×200	2	○	—	—	
Executive 3 0 3 1 F	Twin Room	ET1N	49,610	52,030	61,710	—	8	35.0	120×200	3	—	—	—
		ET2N (B2T)	53,240	55,660	65,340	—	9	36.0	120×200	3	—	—	—
		ET3N	56,870	59,290	68,970	—	14	38.0	120×200	3	—	—	—
	Double Room	ED1N	48,400	50,820	—	—	2	31.0	180×200	2	—	—	—
	Junior Suite	ESUTN (S2T)	108,900	108,900	—	—	5	65.0	130×200	2	—	—	—
Royal Suite	ERSU	363,000	363,000	—	—	1	180.0	140×200	2	—	—	—	

[Exclusive Services for Executive Floor Guests]

- Breakfast on the 33F
- In Room Check In
- Tea Set
- Executive Floor Exclusive Amenities
- Baggage Down Service
- Free use of Hotel Pool and Spa (Advance Reservation)
- Complimentary Tickets to Hiroshima Museum of Art
- Complimentary Drink Ticket
- Late Check Out at 12:00 (instead of usual 11:00)

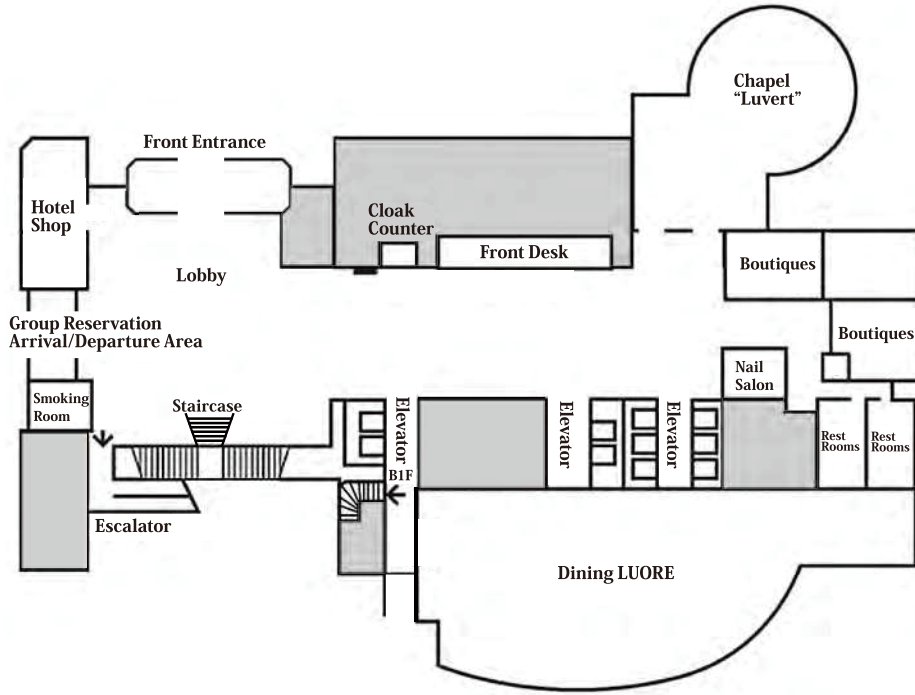
[Additional Hotel Options/ Services]

- Day Use Plans available
- Extra Bed [Standard / Superior Floor] 3,630 JPY
[Executive Floor] 9,680 JPY
- Baby Cot 1,815 JPY
- Parking Fee 2,200 JPY per night
- Seeing Eye Dogs Permitted
- *1) Room Rates increase by about 6,050 JPY during holiday periods

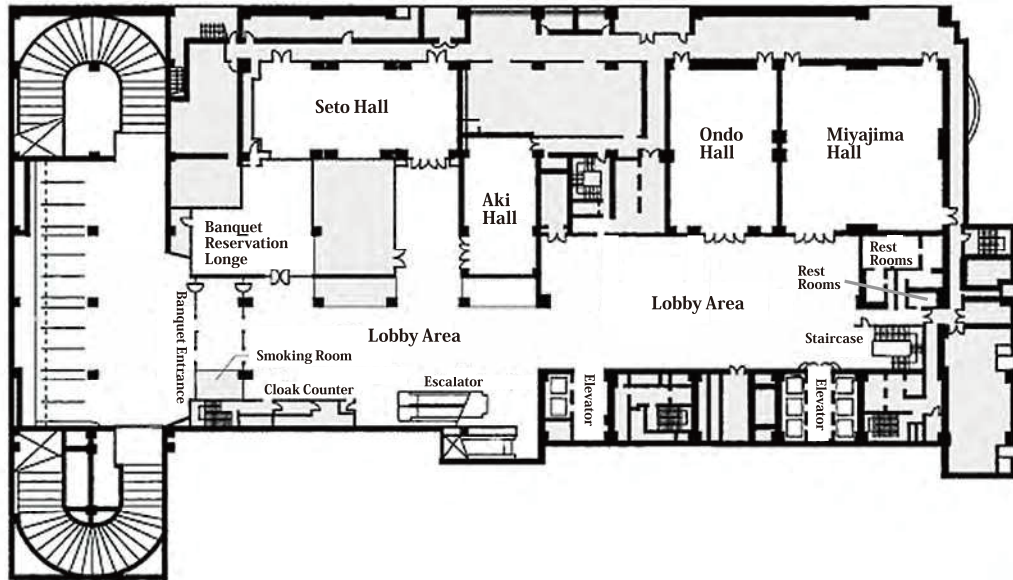
※Rate is including tax and service charge.

FLOOR MAP

1F



3F



4F

